

## BFQ-50

Aluminum alloy / Stainless steel  
Nodular cast iron / Engineering plastics  
Fluorine plastic

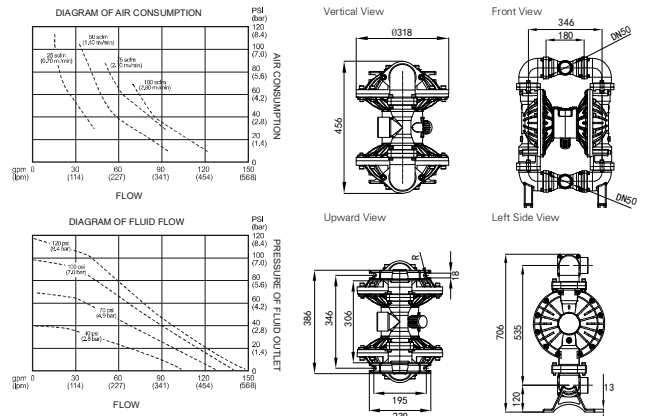
### Specifications

BFQ-50	
Max. Flow Rate	568 lpm
Max. Head	84 m
Max. Suction Height	5.48 m
Max. Working Pressure	8.4 bar
Fluid Inlet/Outlet Size	DN50 (2")
Air Inlet Size	1/2" G (bspp)
Max. Permitted Grain	6.4 mm
Max. Air Consumption	1.5-2.0 m <sup>3</sup> /min
Air Compressor Power	11-15 kw
Every Reciprocating Flow	3.9 L
Max. Reciprocating Speed	145 cpm
Pump body structure materials:	Cast steel Nodular cast iron Aluminum alloy PP Stainless steel PVDF

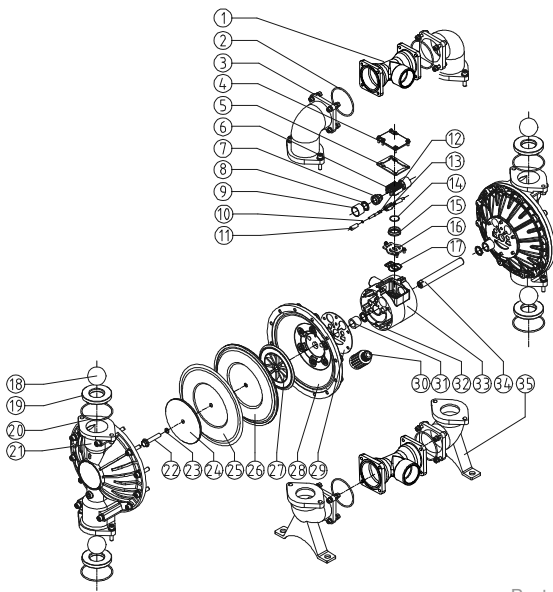


Stainless steel

### Installation dimensions



Note: GODD Manufacturing Co. Ltd reserve the right to change product design without prior notice. Please consult sales for latest product size.



### Parts List

No.	Name	No.	Name	No.	Name	No.	Name
01	Tee Pipe	02	Tee Pipe Sealing Ring	03	Upper Elbow	04	Air Valve Chamber Cover
05	Air Valve Cover Washer	06	Large Slider	07	Piston	08	Piston Sealing Ring
09	Piston Sleeve	10	Booster Power Lever O-ring	11	Booster Power Lever Sleeve	12	Booster Power Lever
13	Small Slider	14	Large Slider Sealing Ring	15	Large Slider Seat	16	Boot Block
17	Boot Block Washer	18	Ball Valve	19	Ball Seat	20	Ball Seat Sealing Ring
21	Stand Column	22	Outer Splint Bolt	23	Outer Pressure Plate Sealing Ring	24	Outer Pressure Plate
25	Teflon Diaphragm	26	Santoprene Diaphragm	27	Inner Pressure Plate	28	Clap Board
29	Air Valve Chamber Washer	30	Muffler	31	Connecting Rod Axis Sleeve	32	V-ring
33	Air Valve Chamber	34	Connecting Rod Axis	35	Lower Elbow		