

QBY3-125 Aluminium alloy

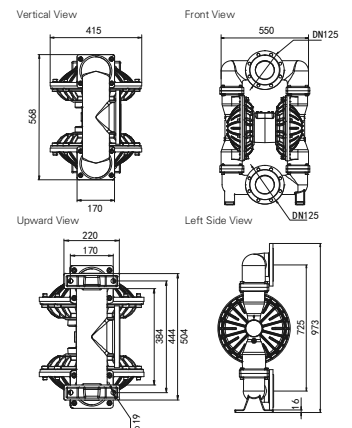
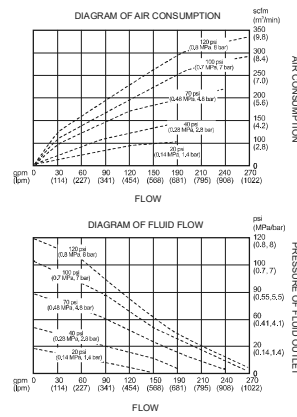
Specifications

QBY3-125	
Max. Flow Rate	1041 lpm
Max. Head	84 m
Max. Suction Height	5.48 m
Max. Working Pressure	8.4 bar
Fluid Inlet/Outlet Size	DN125 (5")
Air Inlet Size	3/4" G (bspp)
Max. Permitted Grain	9.4 mm
Max. Air Consumption	3.0 m ³ /min
Air Compressor Power	18.5-22 kw
Every Reciprocating Flow	7.6 L
Max. Reciprocating Speed	135 cpm
Pump body structure materials: Cast steel Nodular cast iron Aluminium alloy PP Stainless steel PVDF	

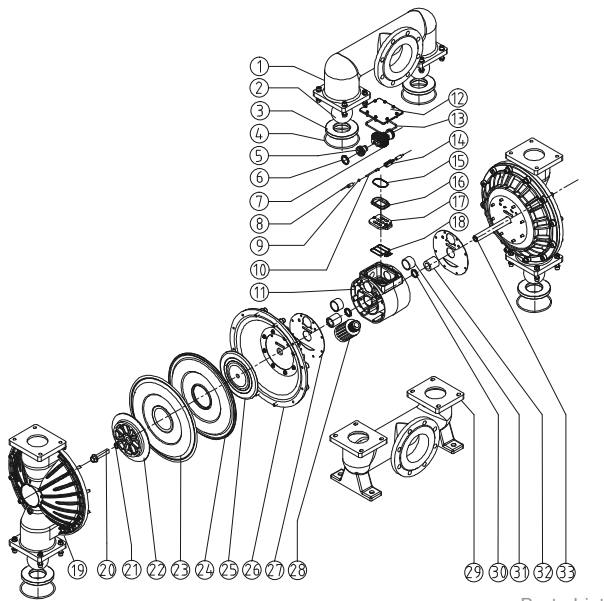


Aluminium alloy

Installation dimensions

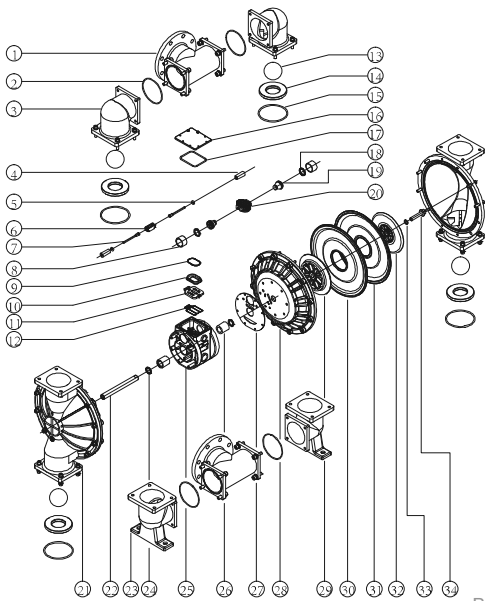


Note: GODD Manufacturing Co., Ltd reserves the right to change product design without prior notice. Please consult sales for latest product size.



Parts List

No.	Name	No.	Name	No.	Name	No.	Name
01	Outlet Manifold	02	Ball Valve	03	Ball Seat	04	Ball Seat Sealing Ring
05	Piston	06	Piston V-ring	07	Large Slider	08	Booster Power Lever Sleeve
09	Booster Power Lever O-ring	10	Booster Power Lever	11	Air Valve Chamber	12	Air Valve Chamber Cover
13	Air Valve Cover Washer	14	Small Slider	15	Large Slider O-ring	16	Large Slider Seat
17	Boot Block	18	Boot Block Washer	19	Stand Column	20	Splint Screw
21	Splint O-ring	22	Outer Splint	23	Teflon Diaphragm	24	Santoprene Diaphragm
25	Inner Splint	26	Clap Board	27	Air Valve Chamber Washer	28	Muffler
29	Inlet Manifold	30	V-ring	31	Piston Sleeve	32	Connecting Rod Axis Sleeve
33	Connecting Rod Axis						



Parts List

No.	Name	No.	Name	No.	Name	No.	Name
01	Tee	02	Tee Sealing Ring	03	Upper Elbow	04	Booster Power Lever Sleeve
05	Booster Power Lever O-ring	06	Small Slider	07	Booster Power Lever	08	Piston Sleeve
09	Large Slider O-ring	10	Large Slider Seat	11	Boot Block	12	Boot Block Washer
13	Ball Valve	14	Ball Seat	15	Ball Seat Sealing Ring	16	Air Valve Chamber Cover
17	Air Valve Cover Washer	18	V-ring	19	Piston	20	Large Slider
21	Stand Column	22	Connecting Rod Axis	23	Lower Elbow	24	V-ring
25	Air Valve Chamber	26	Connecting Rod Axis Sleeve	27	Air Valve Chamber Washer	28	Clap Board
29	Inner Splint	30	Santoprene Diaphragm	31	Teflon Diaphragm	32	Outer Splint
33	Splint O-ring	34	Splint Screw				

QBY3-125

Stainless steel / Nodular cast iron

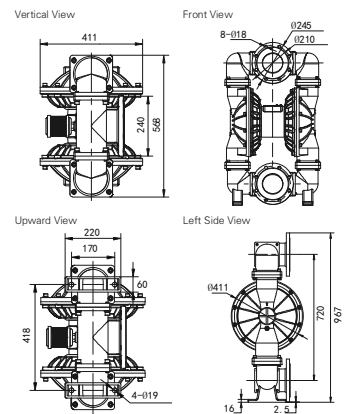
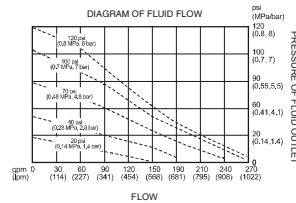
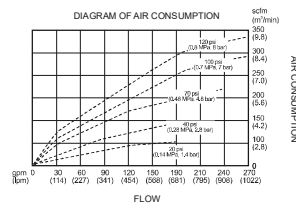
Specifications

QBY3-125	
Max. Flow Rate	1041 lpm
Max. Head	84 m
Max. Suction Height	5.48 m
Max. Working Pressure	8.4 bar
Fluid Inlet/Outlet Size	DN125 (5")
Air Inlet Size	3/4" G (bspp)
Max. Permitted Grain	9.4 mm
Max. Air Consumption	3.0 m ³ /min
Air Compressor Power	18.5-22 kw
Every Reciprocating Flow	7.6 L
Max. Reciprocating Speed	135 cpm
Pump body structure materials:	Cast steel Nodular cast iron Aluminum alloy PP Stainless steel PVDF



Stainless steel

Installation dimensions



Note: GODD Manufacturing Co. Ltd reserves the right to change product design without prior notice. Please consult sales for latest product size.