



AIRBRUSH SERIES FULL LINE CATALOGUE



Trigger Your

The Airbrush is a small air operated tool which sprays paint and liquid materials. Today, they are used in painting for a multitude of applications, such as fine art, automotive custom painting, automotive refinishing, nail art, body art, cosmetics, hobby, craft and others.

You can count on ANEST IWATA to provide you with the best airbrushes on the market, supporting artists and painters throughout the world.

While all IWATA products are manufactured to the highest standards without compromise, each different series has its own specific advantage, for different types of applications.

AIRBRUSH BASIC OPERATIONS

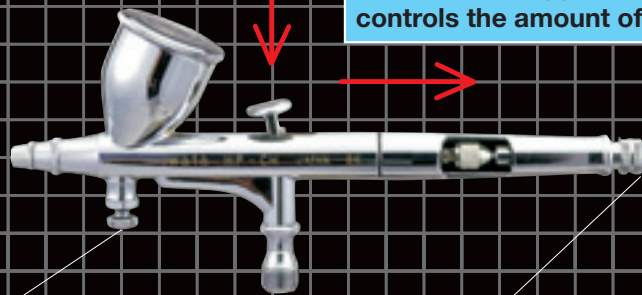


Trigger Operation 1
A downward trigger operation controls the amount of airflow

Trigger Operation 2
A backward trigger operation (pull) controls the amount of paint flow

MAC Valve
Adjusts coarse stippling spray pattern, to full atomization with a quick turn

For fine line and detailed work, it can be adjusted to create optimum airflow for maximum control of the paint flow



PRESET Handle
Adjusts for the perfect working spray width
Limits the distance the needle must travel, allowing greater control of the spray pattern

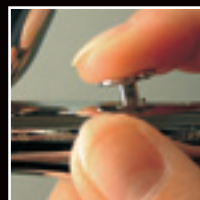
ADVICE

Hand position



Trigger Operation 1

PUSH down on the trigger to control the amount of airflow



Trigger Operation 2

PULL the trigger towards you to control the amount of paint flow



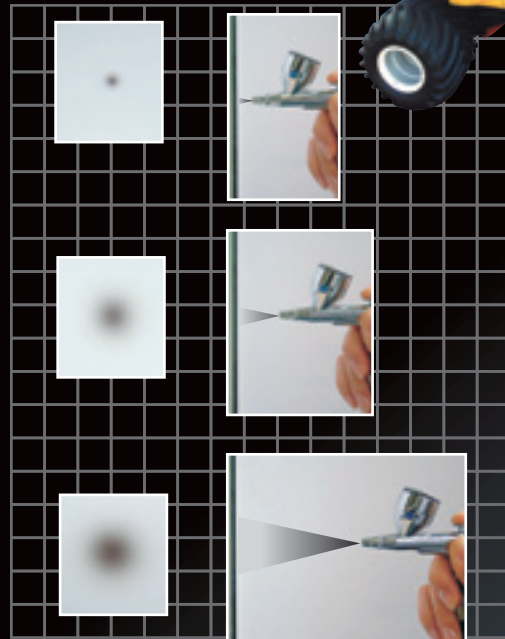
Imagination

FREEHAND TECHNIC



1 Practicing DOTS ★

Slowly and gently pull the trigger, pointing the tip of the airbrush at the painting surface. Adjust the distance between the tip of the airbrush and the painting surface to change the size of the dots. The closer the airbrush is to the painting surface, the smaller the dot will be. The further away it is from the painting surface, the larger the dot will be.



ADVICE

If you get a result as shown below, check the air pressure and the viscosity of the paint used.



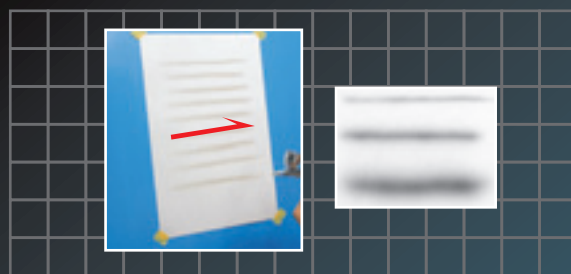
Viscosity too low ← → Viscosity too high

2 Practicing LINES ★★

Use the technique learned above for spraying dots. You can slowly move the airbrush sideways to spray a line. Fine lines can be sprayed when the tip of the airbrush is closest to the painting surface and thicker lines can be sprayed when the tip of the airbrush is further away from the painting surface.

ADVICE

If you get a result as shown below, check your side ways movement of the airbrush. The side ways motion must be steady and smooth, in order to achieve a clean line.

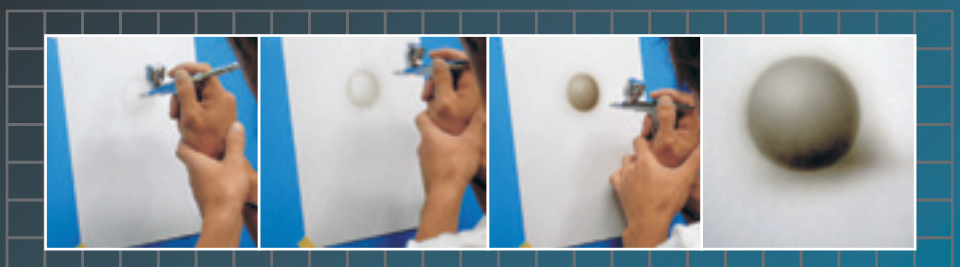


3 Practicing SPHERES ★★★

Apply both techniques from above to spray a sphere that looks three dimensional. Gradually spray small lines. Once you master this technique without using masking film, you will be one step closer to becoming a professional airbrush artist.

ADVICE

Consider which direction you want to move the airbrush. Rather than drawing thick lines, make a series of almost invisible lines to form a sphere. Be careful not to shade in the sphere too much, leave a white spot to show where the light is coming from.



AIRBRUSH LINEUP



Hi-Line Series Hi-Control of Hi-Precision work



Features

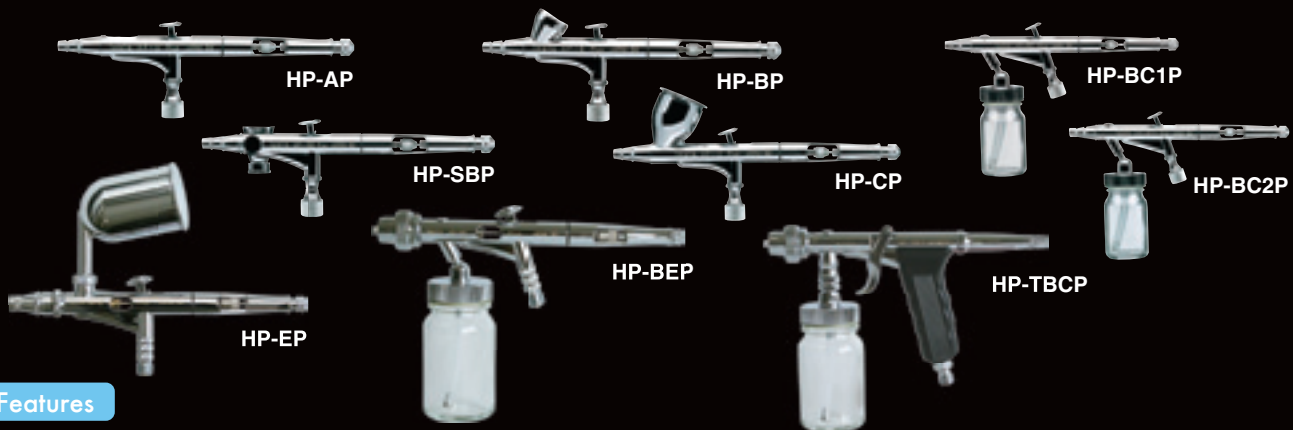
- “MAC VALVE” for precise air adjustment at your finger tip
- “PRESET HANDLE” for precise control of paint flow
- Solvent-proof material is used for fluid needle packing
- One-piece auxiliary lever/needle chucking guide assembly for easy maintenance
- Larger diameter nozzle thread, to make the nozzle much stronger and ensure better nozzle centering

Specifications

Model	Type of Feed	Nozzle Size mm	Cup Capacity ml	Atomization Pattern	Atomizing Air Pressure MPa	Operating Type	Remarks
HP-AH	Gravity	0.2	0.4	Round	0.1~0.29	Double Action	—
HP-BH		0.2	1.5				—
HP-CH		0.3	7.0				—
HP-TH		0.5	15.0	Round/Flat	0.1~0.15	Trigger Action	Center Cup Model
HP-TH2	0.6	130.0	Center Cup Model				



High Performance Plus Series High-Precision, High-Detail Work



Features

- “PRESET HANDLE” for precise control of paint/material flow
- Solvent-proof material is used for fluid needle packing
- One-piece auxiliary lever/needle chucking guide assembly for easy maintenance
- Larger diameter nozzle thread, to make the nozzle much stronger and ensure better nozzle centering

Specifications

Model	Type of Feed	Nozzle Size mm	Cup Capacity ml	Atomization Pattern	Atomizing Air Pressure MPa	Operating Type	Remarks
HP-AP	Gravity	0.2	0.4	Round	0.1~0.29	Double Action	—
HP-BP			1.5				—
HP-SBP	Siphon	0.3	7				Side Cup Model
HP-CP	Gravity		20				—
HP-BC1P	Siphon	0.4	40	Round/Flat	0.1~0.15	Trigger Action	Bottle Cup Model
HP-BC2P							Center Cup Model
HP-EP	Gravity	0.8	40	Round/Flat	0.1~0.15	Trigger Action	Center Cup Model
HP-BEP	Siphon						Bottle Cup Model
HP-TBCP	Siphon						

※Note : Refer page 9 for bottles

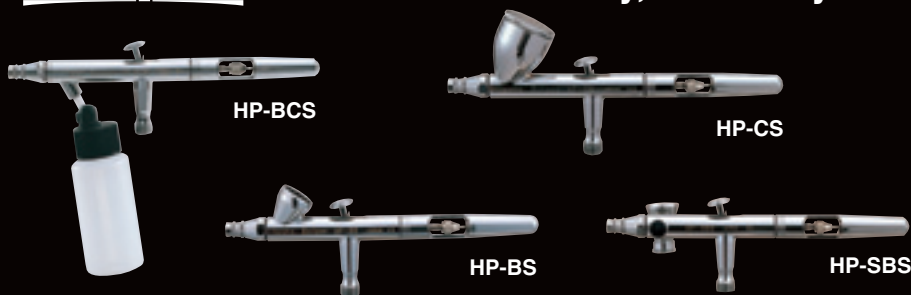
※Note : Joint is not included.



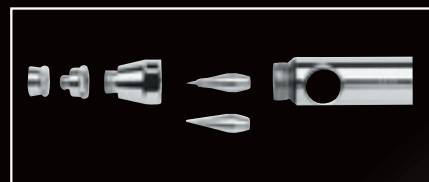
iwata
Eclipse

Eclipse Series

Ultimate Versatility, Reliability and Performance



Eclipse Nozzle Assembly
The drop-in hardened steel nozzles are self-centering for perfect alignment and quick, easy assembly.



Drop-in nozzles

Features

- Solvent-proof material is used for fluid needle packing
- One-piece auxiliary lever/needle chucking guide assembly for easy maintenance
- 0.3 and 0.5 nozzles are interchangeable by changing the nozzle/needle set

Specifications

Model	Type of Feed	Nozzle Size mm	Cup Capacity ml	Atomization Pattern	Atomizing Air Pressure MPa	Operating Type	Remarks
HP-BS	Gravity	0.3	1.5	Round	0.1~0.29	Double Action	—
HP-SBS	Siphon		7				Side Cup Model
HP-CS	Gravity		—				—
HP-BCS	Siphon	0.5	28				Bottle Cup Model

Eclipse G-series

Unique, Big-time Performance

With a unique “pistol-grip” feel, the Eclipse G-Series look like a miniature spray gun, but spray and perform like a large airbrush with their 0.3-0.6mm stainless-steel nozzle

Features

- Both gravity and siphon fed model available with three different nozzle sizes
- Easy-to-adjust flat and round pattern
- Smooth handling
- Works with most twin-piston airbrush compressors like the iwata studio series Power Jet Compressors
- Twilight-chrome finish body (only HP-G3 and G5)
- Stainless-steel nozzle
- Solvent-proof material is used for fluid needle packing



Specifications

Model	Type of Feed	Nozzle Size mm	Cup Capacity ml	Atomization Pattern	Atomizing Air Pressure MPa	Operating Type	Remarks
HP-G3	Gravity	0.3	130	Round/Flat	0.1~0.15	Triggering Type	Center Cup Model
HP-G5		0.5	220				Center Cup Model
HP-G6	Siphon	0.6	112				

Round pattern gun



Most suitable for spraying miniature models, cloth prints, arts and crafts, do-it-yourself items, dyes, etc.

Model	Previous model	Type of feed	Fluid nozzle orifice ϕ mm(inch)	Spray distance mm(inch)	Atomizing air pressure MPa(PSI)	Air consumption ℓ /min(cfm)	Fluid output ml/min	Pattern width mm(inch)	Required air compressor kW	Standard cup	Mass g(lbs)
RG-3L-1	RG-2-1	Gravity	0.4(0.016)	200 (7.9)	0.24 (35.6)	30(1.1)	15	25(1.0)	0.2 - 0.75	Gravity feed cup PC-51(220ml) PC-61(130ml)	180 - 200 (0.40 - 0.44)
RG-3L-2	RG-2-2		0.6(0.024)				35	35(1.4)			
RG-3L-3	RG-2-3		1.0(0.039)				80	35(1.4)			

AIRBRUSH LINEUP

iwata
Revolution

Revolution Series Quality, Performance and Value



Features

- Solvent-proof material is used for fluid needle packing
- Side bottle can be placed on either side of the Airbrush

TR Airbrush has a pistol type trigger, allowing the user to airbrush as if spraying with a Spray Gun.

Specifications

Model	Type of Feed	Nozzle Size mm	Cup Capacity ml	Atomization Pattern	Atomizing Air Pressure MPa	Operation type	Remarks
HP-AR	Gravity	0.3	0.4	Round	0.1~0.29	Double Action	—
HP-BR			1.5				—
HP-CR			7				—
HP-BCR	Siphon	0.5	28			Single Action	Bottle Cup Model
HP-SAR			—				
HP-TR	Gravity	0.2	7			Trigger Action	Side Cup Model
HP-TR1			0.3				
HP-TR2			0.5	15			

iwata
Revolution

Revolution mini series Quality, Performance and Value



Features

- Compact and light weight
- Single action
- Easy fluid control with adjusting knob for even spray
- Solvent-proof material is used for fluid needle packing

Specifications






Model	Type of Feed	Nozzle Size mm	Cup Capacity ml	Atomization Pattern	Atomizing Air Pressure MPa	Operation type
HP-M	Gravity	0.3	1.0	Round	0.1~0.29	Single Action
HP-M1		0.3	1.5			
HP-M2		0.4	7.0			

Single Action Trigger
Paint and air flow together with one trigger operation

Fluid Adj. knob
Adjust paint flow by the knob before operation.
Clockwise : less paint flow
Counter-clockwise : more paint flow

COMBINATION CHART

◎=Suitable ○=Useable △=Can be used under limited condition (air pressure will not reach more than 0.1MPa)

Compressor Model		IS-50	IS-800	IS-850	IS-875	IS-925	IS-875HT	IS-925HT	IS-975MB
Airbrush Series/Model									
 Hi-Line Hi-Control of High-Pressure Work iwata	HP-AH	○	◎	◎	◎	◎	◎	◎	◎
	HP-BH	○	◎	◎	◎	◎	◎	◎	◎
	HP-CH	○	◎	◎	◎	◎	◎	◎	◎
	HP-TH		○	○	○	○	○	○	○
	HP-TH2					○	○	○	○
 High Performance High-Precision, High-Detail Work plus iwata	HP-AP	○	◎	◎	◎	◎	◎	◎	◎
	HP-BP	○	◎	◎	◎	◎	◎	◎	◎
	HP-SBP	○	◎	◎	◎	◎	◎	◎	◎
	HP-CP	○	◎	◎	◎	◎	◎	◎	◎
	HP-BC1P	△	◎	◎	◎	◎	◎	◎	◎
	HP-BC2P	△	○	○	○	○	○	○	○
	HP-BEP					○	○	○	○
	HP-EP					○	○	○	○
	HP-TBCP					○	○	○	○
 Eclipse iwata	HP-BS		○	○	○	○	○	○	○
	HP-CS		○	○	○	○	○	○	○
	HP-SBS		○	○	○	○	○	○	○
	HP-BCS		○	○	○	○	○	○	○
	HP-G3					○	○	○	○
	HP-G5					○	○	○	○
	HP-G6					○	○	○	○
 Revolution iwata	HP-AR	○	◎	◎	◎	◎	◎	◎	◎
	HP-BR	○	◎	◎	◎	◎	◎	◎	◎
	HP-CR	△	○	○	○	○	○	○	○
	HP-BCR	△	○	○	○	○	○	○	○
	HP-SAR	△	○	○	○	○	○	○	○
	HP-TR	○	◎	◎	◎	◎	◎	◎	◎
	HP-TR1	△	○	○	○	○	○	○	○
	HP-TR2	△	○	○	○	○	○	○	○
 mini series iwata	HP-M	○	◎	◎	◎	◎	◎	◎	◎
	HP-M1	○	◎	◎	◎	◎	◎	◎	◎
	HP-M2	△	◎	◎	◎	◎	◎	◎	◎

AIRBRUSH KITS

Airbrush start kit



Model	Description	Airbrush	Compressor
HP-S50-K	Airbrush start kit	HP-CR	IS-50

Airbrush standard kit



Model	Description	Airbrush	Compressor
HP-ST850-TRI	Airbrush Standard Kit	HP-TR1	IS-850

Oil-less compressors for airbrushes

IS-875HT/925HT

Powerful and compact
Reliable



- Available 150W single cylinder and 220W two cylinders models with air tank
- Auto shut off
- Equipped with pressure switch as standard

Model	IS-875HT (Smart Jet Plus)	IS-925HT (Power Jet Plus)
Motor	W	150/200
Max pressure	MPa	4.2
Air consumption	ℓ/min	15
Mass	kg	5.5
Dimensions	mm	280 x 160 x 275
Included Accessories	Filter Regulator/3m Braided hose(HPA-BH31)/ Airbrush holder	

Remarks: In the above dimensions not included accessories

IS-875/925



- Available in 91 W single cylinder and 125 W two cylinder version
- Compact design
- Silent
- Equipped with pressure switch as standard

Model	IS-875 (Smart Jet Pro)	IS-925 (Power Jet Lite)
Motor	W	91
Max pressure	MPa	3.1
Air consumption	ℓ/min	6.0
Mass	kg	6.4
Dimensions	mm	156 x 310 x 260
Included Accessories	3m air hose (HPA-SH32)	

Remarks: In the above dimensions not included accessories

IS-850



- Compact design
- Silent
- Equipped with pressure switch as standard

Model	IS-850
Motor	W
Max pressure	MPa
Air consumption	ℓ/min
Mass	kg
Dimensions	mm
Included Accessories	4m Coil hose (HPA-CH41)/ 3m air hose (HPA-SH31)/ Filter set

Remarks: In the above dimensions not included accessories

IS-50



- Compact design
- Light weight (2.9 Kg)
- Equipped with release valve

Model	IS-50
Motor	W
Max pressure	MPa
Air consumption	ℓ/min
Mass	kg
Dimensions	mm
Included Accessories	4m Coil hose (HPA-CH41)

Remarks: In the above dimensions not included accessories

IS-976MB

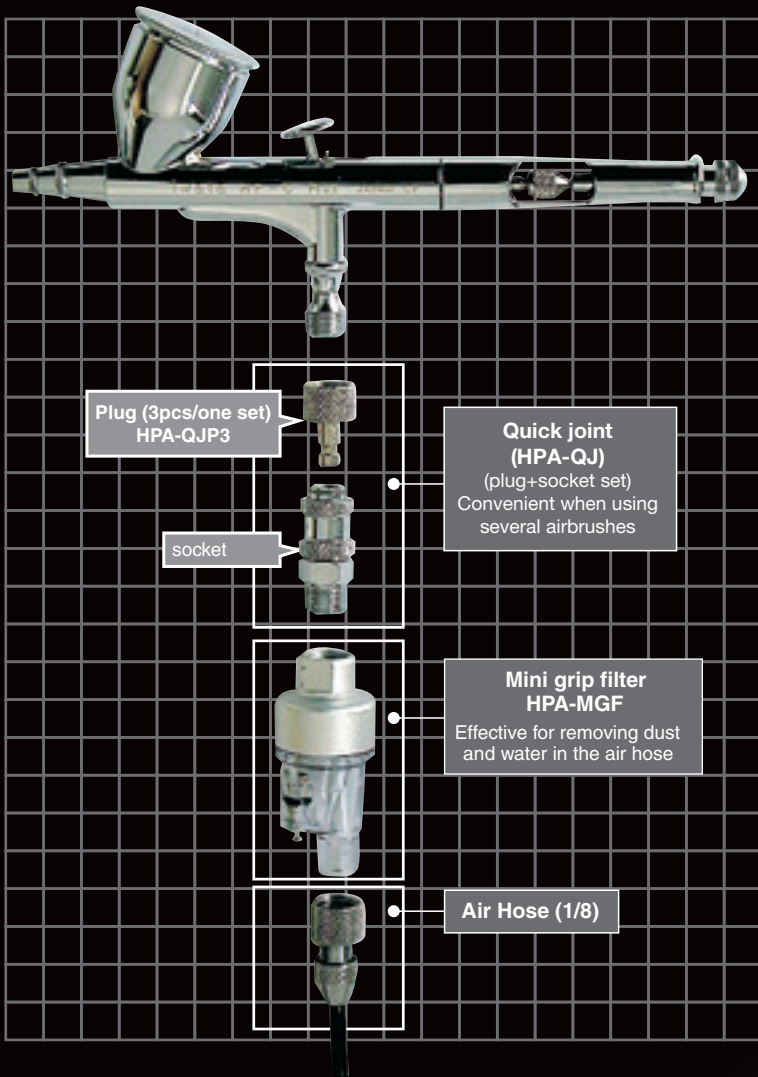


- Maintenance-free, oil-less two pole motor air compressor
- Case-mounted air regulator and moisture filter
- Dual manifold air regulator with airbrush and spray gun holders
- 2.5 liter air storage tank and internal cooling fan
- Equipped with pressure switch as standard
- Easy-to-setup

Model	IS-976MB
Motor	W
Max pressure	MPa
Air consumption	ℓ/min
Mass	kg
Dimensions	mm
Air Tank Capacity	2.5
Included Accessories	Filter Regulator/3m Braided hose(HPA-BH32)/ Airbrush holder

Remarks: In the above dimensions not included accessories

AIRBRUSH ACCESSORIES



Long Joint
HPA-LJ



Trigger Grip Handle
HPA-TG



Breed Valve
HPA-BV2



HPA-FR

Filter/Regulator assembly
Inlet: 1/4 male
Outlet: 1/8 male



HPA-R

Regulator for air pressure adjustment
Inlet 1/8 male
Out let 1/8 male

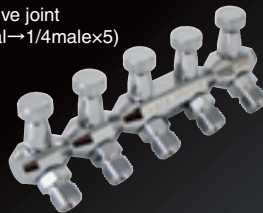
HPA-VJ3

3way valve joint
(1/8femal→1/8malex3)



HPA-VJ5

5way valve joint
(1/4femal→1/4malex5)



HPA-WB1

Washing Brush(Round)



HPA-WB2

Washing Brush(Flat)



Adapters



HPA-J1
(1/8 female
→1/4 male)



HPA-J2
(1/4 female
→1/8 male)



HPA-J3
(1/4 male
→1/8 male)



HPA-J4
(1/8male
→1/8male)

Airbrush Cleaning Pot HPA-ACP

For easy cleaning and color change

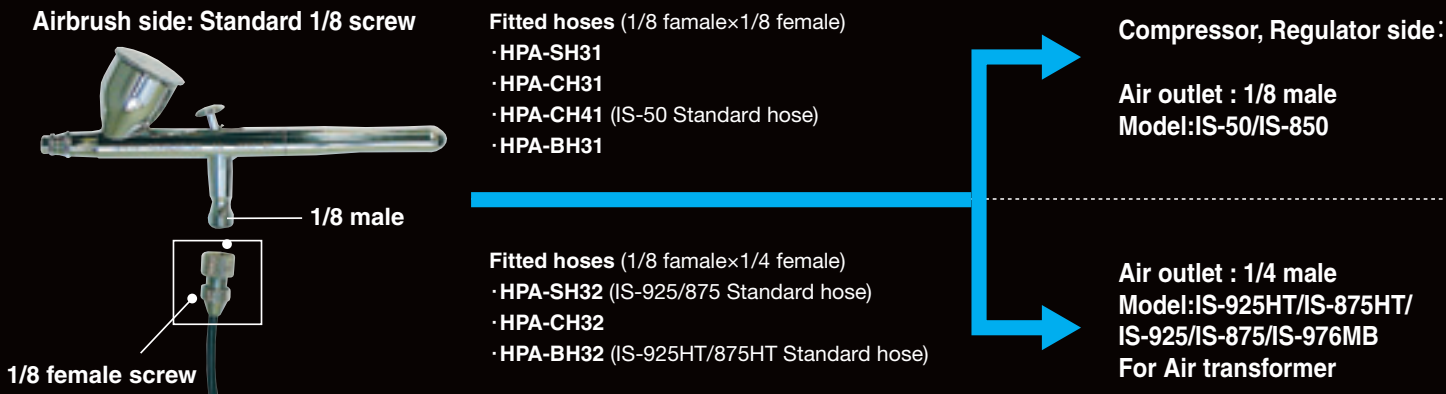


(Airbrush not included)

(Regulator not included)

AIRBRUSH ACCESSORIES

Sample connection



Straight hose



HPA-SH31
1/8x1/8
(ø2x3m)

HPA-SH11
1/8x1/8
(ø2x1m)



HPA-SH32
1/4x1/8 (ø2x3m)

Coil hose



HPA-CH41
1/8x1/8 (ø4x4m)



HPA-CH32
1/4x1/8 (ø2x3m)

Braided Hose



HPA-BH31
1/8x1/8
(ø4.5x3m)

HPA-BH32
1/4x1/8
(ø4.5x3m)

* Photo refers to HPA-BH32

Bottle for BC model



HP-BCS



Plastic bottle
(for changing color)

HPA-PBS3 3pcs/ 1set (28ml)
HPA-PBS3-2 3pcs/ 1set (56ml)
HPA-PBS3-4 3pcs/ 1set (112ml)



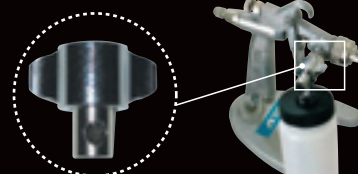
G6 Air brush



Plastic bottle
(for changing color)
2 pcs/1 set (112ml)
HPA-PBS2-4

Bottle Adapter (For G6 Gun) HPA-BA

Can also be used with
W-100G, LPH-100-LVG, LPH-50



Side caps and bottle for SB model



1.5ml
HPA-SB1
(Standard cup
for HP-SBS)



7ml
HPA-SB2
(Standard cup
for HP-TR1)



15ml
HPA-SB3
(Standard cup
for HP-TR2)



Plastic bottle
2pcs/1set(28ml)
HPA-SPBS2



Both SB and TR type
can fit bottles
on left and right sides

Custom Automotive & Motorcycle Airbrushing 101 By Pamela Shanteau



Airbrush how to book : HPA-MG2
Get inspired to paint like a pro with
the definitive guide to custom auto painting.

Center Caps (For HP-TH/HP-TH2 only)



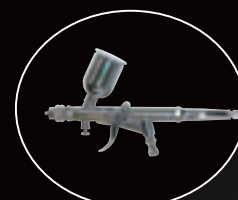
HPA-CB1
(15ml)



HPA-CB2
(30ml)



HPA-CB3
(130ml)



HP-TH

TEMPLATE SETS



HPA-TF1
9 Styles template in the set
(with instructional DVD by Mike Lavallee)

Diablo
(A:45x25,B:35x20,C:25x15) cm

Wild Fire
(A:45x20,B:35x15,C:25x12) cm

Inferno
(A:45x22,B:40x19,C:27x13) cm



HPA-TF2
9 Styles template in the set
(DVD not included)

FireBall
(A:35x26,B:26x20,C:19x13) cm

Blaze
(A:40x25,B:30x20,C:22x13) cm

Pyro
(A:35x26,B:25x20,C:19x15) cm

Masking Film



Hobby Mask
HPA-HM1
(15cmx9.15m)



Stretch Mask
HPA-F101
(46cmx9.15m)



Hobby Mask (MINI series)
HPA-HM2MS
(10cmx4.5m)



Stretch Mask (MINI Series)
HPA-F103MS
(10cmx9.15m)

TEXTILE COLORS

Water based type
Textile colors allow for spraying
on variety of surfaces,
including leather, wood, canvas, textiles,
silk and found objects.



- ① HPA-TC110 White
 - ② HPA-TC120 Black
 - ③ HPA-TC130 Red
 - ④ HPA-TC131 Pink
 - ⑤ HPA-TC150 Yellow
 - ⑥ HPA-TC160 Green
 - ⑦ HPA-TC161 Aqua green
 - ⑧ HPA-TC170 Blue
 - ⑨ HPA-TC180 Violet
- 9 colors 56mr

HOW TO VIDEO & DVD

VOL.1 BASICS

Covers step by step airbrushing techniques with use of one color(black)
37 minutes(Japanese Only)



HPA-AT1 VIDEO
HPA-ATD1 DVD

VOL.2 Applied Technique 1

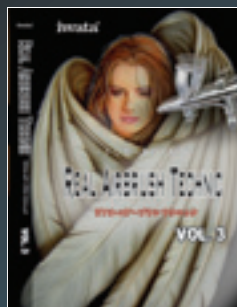
Use of basic and intermediate techniques to form a face with use of one color(black)
73 minutes(Japanese only)



HPA-AT2 VIDEO
HPA-ATD2 DVD

VOL.3 Applied Technique 2

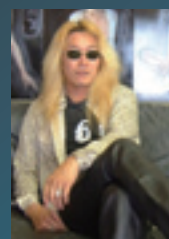
Use of intermediate to advanced techniques to form a face in full color.
67 minutes(Japanese Only)



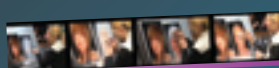
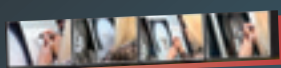
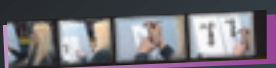
HPA-AT3 VIDEO
HPA-ATD3 DVD

Complete

HPA-ATDC DVD
Included (Vol,1,2,3)



Supervised by "Art of Shin" Shinichi Noda, fetish artist, Kanazawa Japan "Art of Shin" is pioneer of fetish art and has worked globally. He spent seeing many art work while his early years. In late 80's, he visited the States as member of indies band and met airbrush, then started his airbrushing activity. Shin's offhand and freehand technique is his most distinctive feature. Art work drawn from his uniquely technique is fascinating and realistic, and he received great acclaim worldwide. Feel fetishism, eroticism and realism of "Art of Shin" world.



PRACTICE

Basics



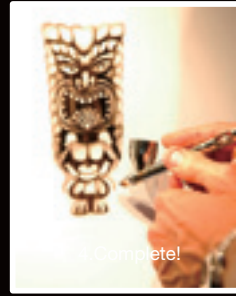
1. Place template HPA-TM1 on the canvas and spray. Be sure to cover the areas that you do not want to spray with masking tape.



2. Use the same template (top and bottom side) to finish the edges.



3. By using a free hand technique, shade in the areas in where shadow needs to be emphasized.



Work Complete!



Applied Techniques



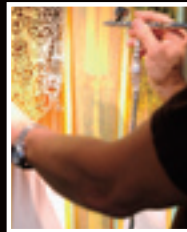
1. Cover the work completed in the basic section and also the areas surrounding the Tiki



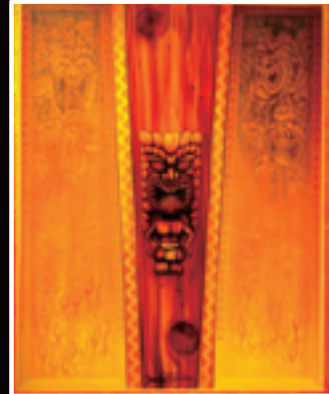
2. By using a free hand technique, spray a wood grain effect.



3. Further perform a wood grain effect after taking the masking tape off from the Tiki.



4. Mask the areas worked in steps 1 to 3. And use a template HPA-TM12 on the sides, with a yellow background to airbrush in multiple Tikis.



5. Now use HPA-TM1 to finish the edges.



6. By further using the HPA-TM1 form lightly the flames.



7. Use the stencil to make another edge.



8. Touch up and complete the artwork by free hand technique.



Airbrush artist
Dennis Mathewson,
owner of custom paint shop
"Cosmic Airbrush",
Honolulu Hawaii

Dennis is truly one of the pioneers of custom painting and airbrushing. As a naturally artistic kid, back in the 70's he started out with his first airbrush. After a few years he went to work airbrushing shirts at the Rat's Hole for the late Karl Smith, founder of the famous Rat's Hole Chopper Show in Daytona Beach Florida. Dennis gets great reputation for his fine art work and his arts are displayed at an art gallery in Hawaii and West coast. His activity area is not only the US. He has been holding airbrush seminar also in Japan and Europe.

Official site for the fine art work of Dennis Mathewson
www.cosmicairbrush.com



Safety precautions

■ For operation

1. Never use these airbrushes for the other purposes.
2. Before use, be sure to carefully read the instruction manual for correct usage.
3. Never alter these products for any application. If done, it can cause poor performance and failure.

■ Others

1. Figures in this catalog are measured by our test paints. They will differ according to kinds of paints and painting conditions.



Products mentioned in the catalog are subject to use in Japan.

When products are purchased in Japan and exported to another country, first check the local regulations and safety standards in the country to which you are exporting the products, and export them accordingly. Specifications in this catalog are subject to change without notice owing to improvements of products.



ANEST IWATA Corporation

3176, Shinyoshida-cho, Kohoku-ku,
Yokohama 223-8501, Japan
Tel: 045-591-1118 Fax: 045-591-1137
<http://www.anest-iwata.co.jp/>